

Golden Light Designs

CROSS - STITCH PATTERNS, LEAFLETS, SUPPLIES, AND MORE

Lions

24-AL



Based on Lions Standing by Vera Kratochvil

Visit our blog at <http://goldenlight-designs.blogspot.com>
Email us at goldenlightdesigns@yahoo.com



by: Golden Light Designs

Pattern Code:

024-AL

Stitch Count:

252w X 167h

Grid Size:

252w X 167h

Colors used:

39 Colors Used

Recommended Fabric:

14 Count White Aida

Design Size:

8 Count - 31-1/2w X 20-7/8h in

10 Count - 25-1/8w X 16-5/8h in

14 Count - 18w X 11-7/8h in

16 Count - 15-3/4w X 10-3/8h in

Size to Cut Fabric:

Add a minimum of 6 inches to the width and height of the design size. Three inches per side is sufficient for framing but feel free to add more to suit your finishing needs.

Floss Used For Full Stitches

No.	Symbol	Strands	DMC	Anchor	Description	Count
1.		3	168	848	Pewter-VY LT	614
2.	*	3	300	352	Mahogany-VY DK	1566
3.	▀	3	301	1049	Mahogany-MD	1105
4.	○	3	310	403	Black	734
5.	△	3	400	351	Mahogany-DK	293
6.	♡	3	402	347	Mahogany-VY LT	476
7.	◇	3	407	914	Desert Sand-DK	2585
8.	➔	3	414	235	Steel Gray-DK	503
9.	a	3	415	234	Pearl Gray	1030
10.	➔	3	420	374	Hazelnut Brown-DK	1095
11.	◆	3	434	944	Brown-LT	794
12.	⊙	3	435	374	Brown-VY LT	1932
13.	☾	3	612	378	Drab Brown-LT	334
14.	✕	3	632	1019	Desert Sand-UL VY DK	1471
15.	↓	3	646	8581	Beaver Gray-DK	449
16.	■	3	647	858	Beaver Gray-MD	1026
17.	9	3	738	367	Tan-VY LT	1185
18.	⌘	3	779	904	Cocoa-DK	536
19.	⊛	3	801	358	Coffee Brown-DK	1759
20.	♥	3	839	904	Beige Brown-DK	912
21.	♣	3	840	832	Beige Brown-MD	579
22.	♣	3	841	392	Beige Brown-LT	856
23.	2	3	842	391	Beige Brown-VY LT	566
24.	●	3	902	70	Garnet-VY DK	895



by: Golden Light Designs

25.	↓	3	919	340	Red Copper	82
26.	✎	3	920	1004	Copper-MD	40
27.	~	3	921	884	Copper	134
28.	⊗	3	938	905	Coffee Brown-UL DK	2583
29.	▨	3	975	371	Golden Brown-DK	1142
30.	+	3	976	901	Golden Brown-MD	97
31.	=	3	3024	397	Brown Gray-VY LT	981
32.	∫	3	3064	914	Desert Sand	1824
33.	▪	3	3072	847	Beaver Gray-VY LT	5115
34.	■	3	3371	382	Black Brown	1415
35.	✂	3	3772	379	Desert Sand-VY DK	1428
36.	↻	3	3776	1048	Mahogany-LT	514
37.	↑	3	3790	903	Beige Gray-UL DK	867
38.	▣	3	3862	903	Mocha Beige-DK	1105
39.	◐	3	3863	1084	Mocha Beige-MD	1462

Chart Connection:

1	2	3	4	5
6	7	8	9	10
11	12	13	14	15

Note:

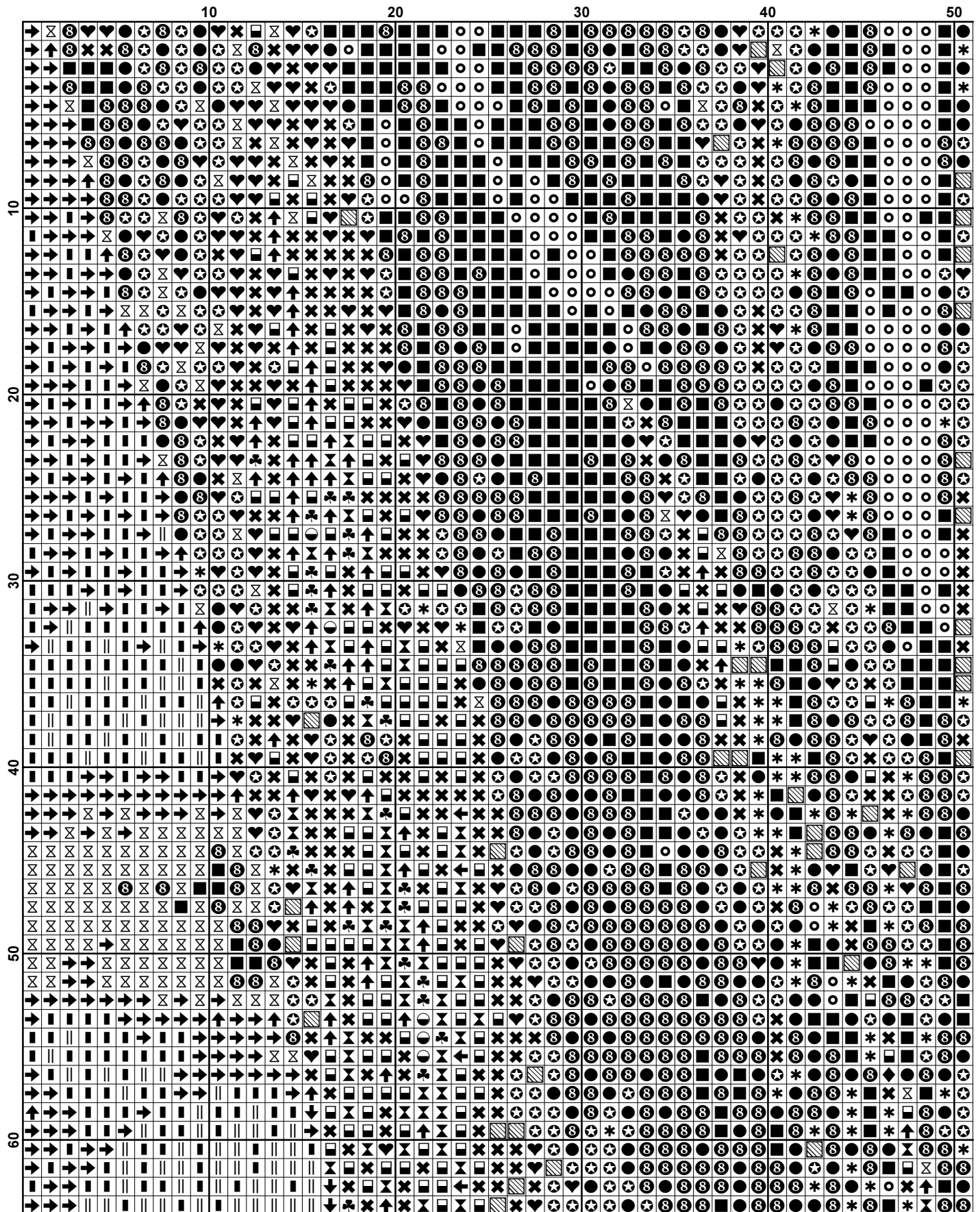
We have made every effort to ensure the accuracy of this chart, however, we are not responsible for typographical errors, human errors and variations in individual stitching.

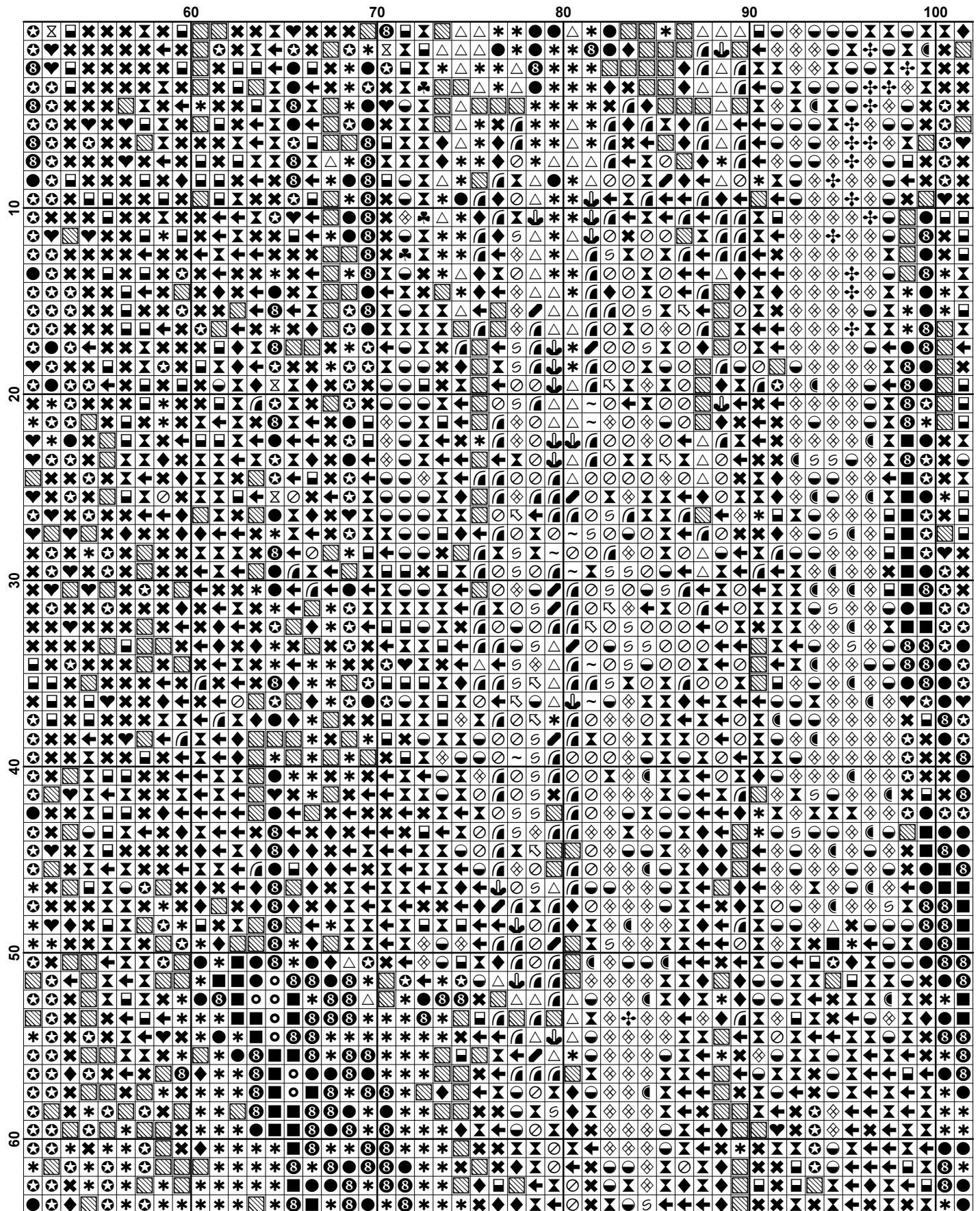
Model was charted using DMC Threads.

This chart is based on Lions Standing by Vera Kratochvil.

No part of this graph, chart, color key, and instructions may be reproduced in any manner, kitted, re-charted, stored in a retrieval system, or transmitted in any form or by any means, electronic, mechanical, photocopying, recording or otherwise including posting in the internet, without the prior express written permission from Golden Lights Designs. It is illegal to redistribute, email, sell or give away any reproduction of this original chart, instructions, and color images in any manner.

If you want to order a kit of this chart, please e-mail me at goldenlightdesigns@yahoo.com





	110	120	130	140	150
10	◆◆△↑↑↑↑	◆◆△↑↑↑↑	◆◆△↑↑↑↑	◆◆△↑↑↑↑	◆◆△↑↑↑↑
20	◆◆△↑↑↑↑	◆◆△↑↑↑↑	◆◆△↑↑↑↑	◆◆△↑↑↑↑	◆◆△↑↑↑↑
30	◆◆△↑↑↑↑	◆◆△↑↑↑↑	◆◆△↑↑↑↑	◆◆△↑↑↑↑	◆◆△↑↑↑↑
40	◆◆△↑↑↑↑	◆◆△↑↑↑↑	◆◆△↑↑↑↑	◆◆△↑↑↑↑	◆◆△↑↑↑↑
50	◆◆△↑↑↑↑	◆◆△↑↑↑↑	◆◆△↑↑↑↑	◆◆△↑↑↑↑	◆◆△↑↑↑↑
60	◆◆△↑↑↑↑	◆◆△↑↑↑↑	◆◆△↑↑↑↑	◆◆△↑↑↑↑	◆◆△↑↑↑↑

