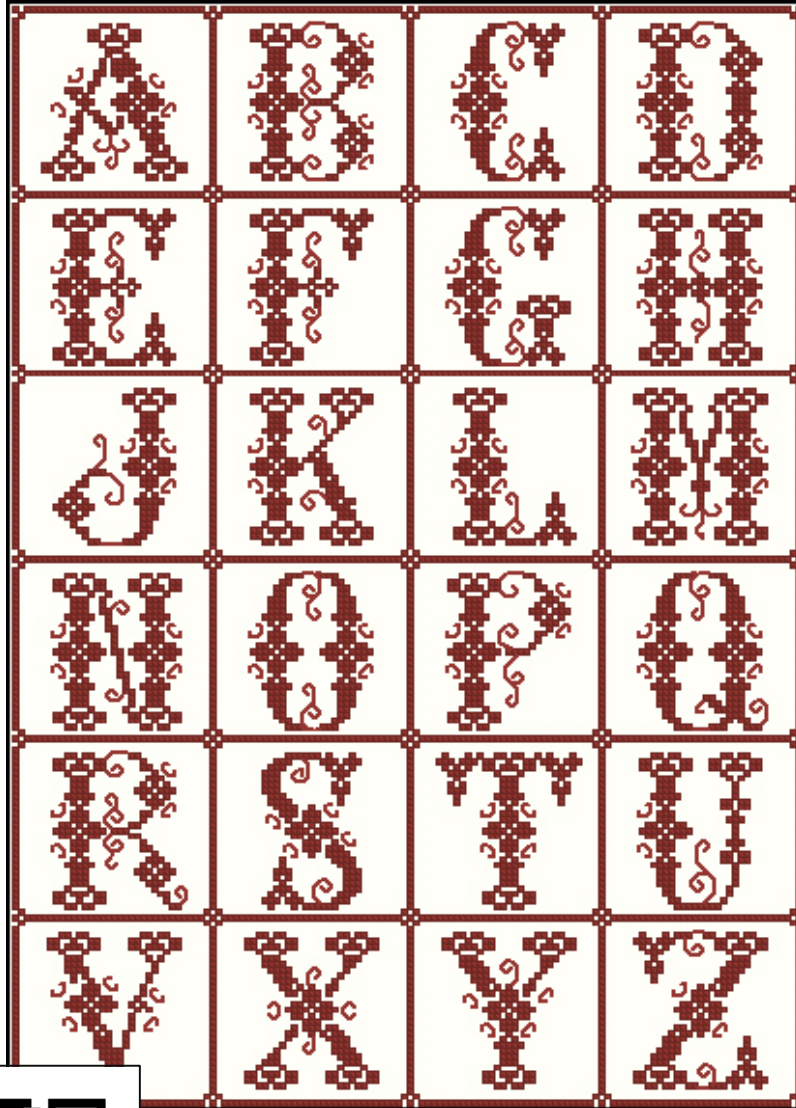


Golden Light Designs

CROSS - STITCH PATTERNS, LEAFLETS, SUPPLIES, AND MORE

ALPHABET

By Sajou 029-ABC



1 Color

Stitch Count: 136w x190h

9.625"w x 13.5"h on 14 ct. White Aida

*Model was charted using DMC Thread

For more information about our products and services, visit our website at

<http://goldenlight-designs.blogspot.com>

Email us at goldenlightdesigns@yahoo.com



ALPHABET by Sajou



from: Golden Light Designs

Pattern Code:

029-ABC

Stitch Count:

136w X 190h

Colors used:

1 Color Used

Recommended Fabric:

14 Count Antique White Aida

Design Size:

8 Count - 17w X 23-3/4h in

10 Count - 13-1/2w X 19h in

14 Count - 9-5/8w X 13-1/2h in

16 Count - 8-1/2w X 11-7/8h in

Size to Cut Fabric:

Add a minimum of 6 inches to the width and height of the design size. Three inches per side is sufficient for framing but feel free to add more to suit your finishing needs.

Floss Used For Full Stitches

No.	Color	Strands	Anchor	DMC	Description	Count
1.		2	498	498	Christmas Red-DK	5719

Special Instructions:

Use one (1) strand of thread for back stitching.

The thread color is only a suggestion. You may use any color you prefer.

Note:

We have made every effort to ensure the accuracy of this chart, however, we are not responsible for typographical errors, human errors and variations in individual stitching.

Charted from Sajou Album No. 304

If you want to order a kit of this chart, please e-mail us at goldenlightdesigns@yahoo.com

Chart Connection:

1	2
3	4

